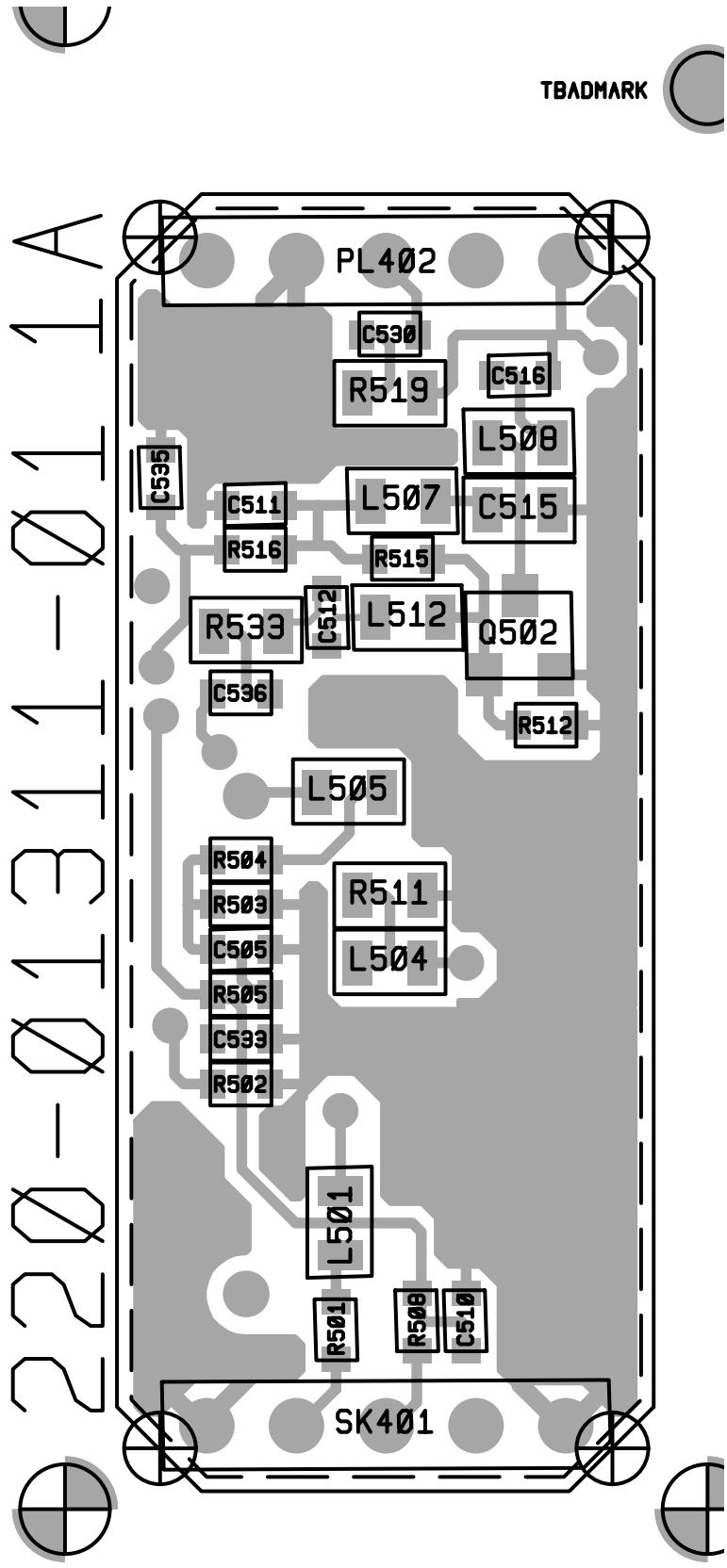


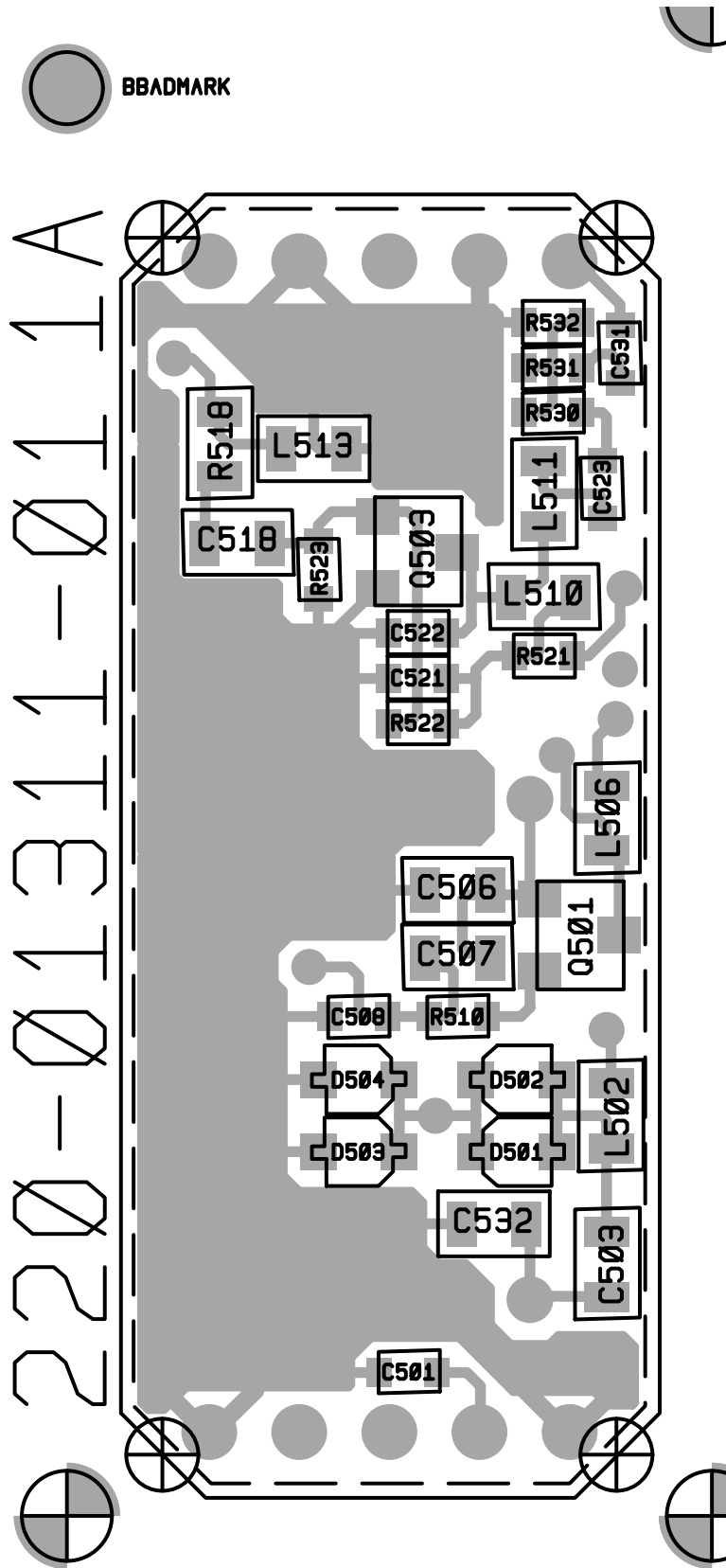
6.15 T3000-8000 VCO PCB

T3000-8000 VCO Parts List (IPN 220-01311-01)

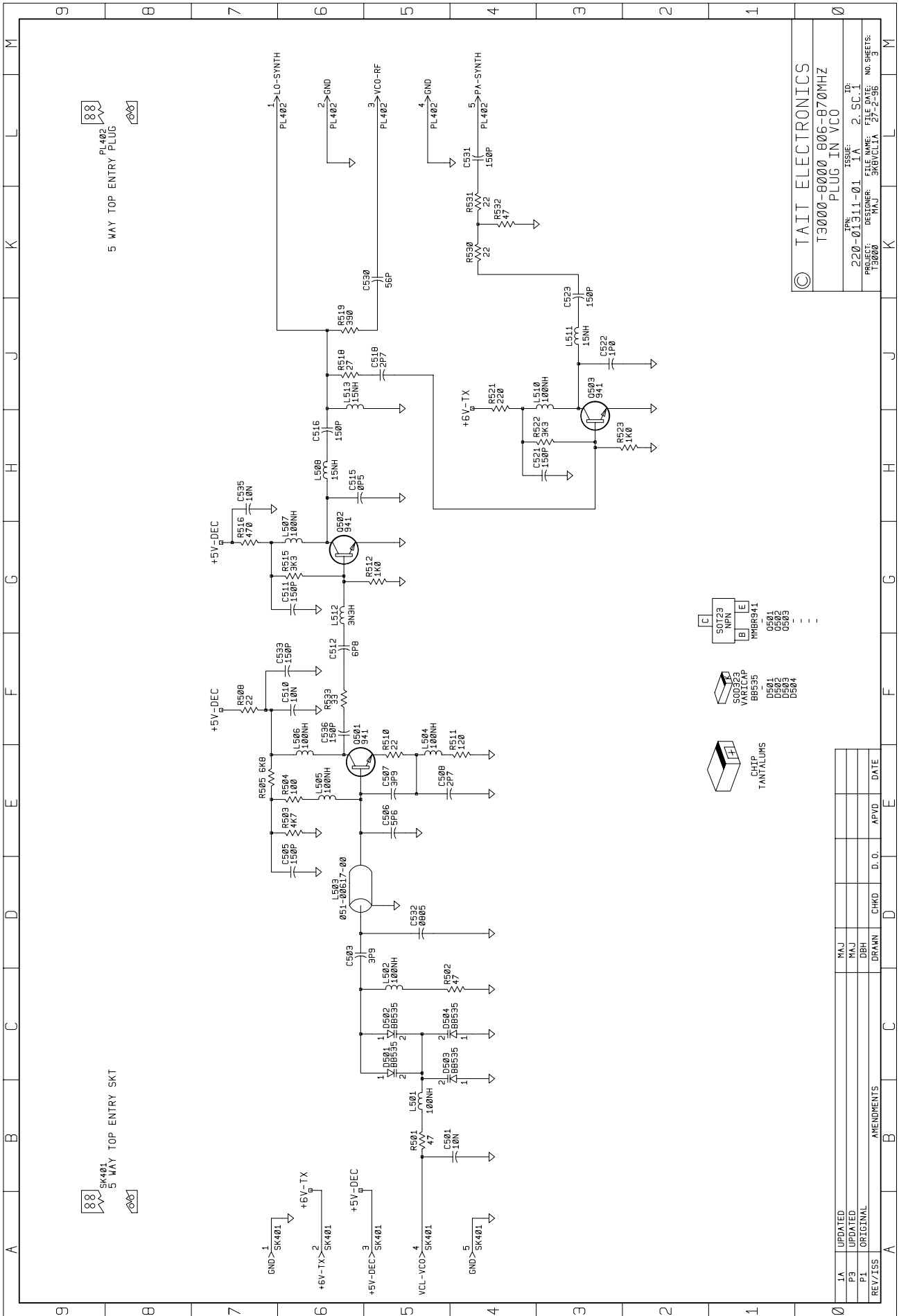
Ref	Var	IPN	Description	Ref	Var	IPN	Description
C501		018-15100-00	CAP 0603 CHIP 10N 50V X7R +-10%				
C503		015-21390-02	(L) CAP CER 0805 CHIP 3P9 1% NPO 50V				
C505		018-13150-00	CAP 0603 CHIP 150P 50V NPO +-5%				
C506		015-21560-02	(L) CAP CER 0805 CHIP 5P6 1% NPO 50V				
C507		015-21390-02	(L) CAP CER 0805 CHIP 3P9 1% NPO 50V				
C508		018-11270-10	CAP 0603 CHIP 2P7 50V NPO +-0.1P				
C510		018-15100-00	CAP 0603 CHIP 10N 50V X7R +-10%				
C511		018-13150-00	CAP 0603 CHIP 150P 50V NPO +-5%				
C512		018-11680-10	CAP 0603 CHIP 6P8 50V NPO +-0.1P				
C515		015-20050-02	(L) CAP CER 0805 CHIP 0P5 1% NPO 50V				
C516		018-13150-00	CAP 0603 CHIP 150P 50V NPO +-5%				
C518		015-21270-02	(L) CAP CER 0805 CHIP 2P7 1% NPO 50V				
C521		018-13150-00	CAP 0603 CHIP 150P 50V NPO +-5%				
C522		018-11100-10	CAP 0603 CHIP 1P0 50V NPO +-0.1P				
C523		018-13150-00	CAP 0603 CHIP 150P 50V NPO +-5%				
C530		018-12560-10	CAP 0603 CHIP 56P 50V NPO +-1%				
C531		018-13150-00	CAP 0603 CHIP 150P 50V NPO +-5%				
C533		018-13150-00	CAP 0603 CHIP 150P 50V NPO +-5%				
C535		018-15100-00	CAP 0603 CHIP 10N 50V X7R +-10%				
C536		018-13150-00	CAP 0603 CHIP 150P 50V NPO +-5%				
D501		001-10005-35	(S) DIODE SMD VARICAP BB535 SOD323				
D502		001-10005-35	(S) DIODE SMD VARICAP BB535 SOD323				
D503		001-10005-35	(S) DIODE SMD VARICAP BB535 SOD323				
D504		001-10005-35	(S) DIODE SMD VARICAP BB535 SOD323				
L501		056-10100-03	IND SMD 0805 100NH 10%				
L502		056-10100-03	IND SMD 0805 100NH 10%				
L503		051-00633-00	(L) COIL HALF ROUND 1.6MM COAX ON 12.5M				
L504		056-10100-03	IND SMD 0805 100NH 10%				
L505		056-10100-03	IND SMD 0805 100NH 10%				
L506		056-10100-03	IND SMD 0805 100NH 10%				
L507		056-10100-03	IND SMD 0805 100NH 10%				
L508		056-10015-03	IND SMD 0805 15NH 20%				
L510		056-10100-03	IND SMD 0805 100NH 10%				
L511		056-10015-03	IND SMD 0805 15NH 20%				
L512		056-10003-33	IND SMD 0805 3.3NH 20%				
L513		056-10015-03	IND SMD 0805 15NH 20%				
PL402		240-00026-27	CONN 5WAY MALE INTERCONNECT STRIP PCB				
Q501		000-10009-41	(S) XSTR SMD MMBR941L RF LOW NOISE SOT2				
Q502		000-10009-41	(S) XSTR SMD MMBR941L RF LOW NOISE SOT2				
Q503		000-10009-41	(S) XSTR SMD MMBR941L RF LOW NOISE SOT2				
R501		038-12470-00	RES 0603 CHIP 47E 1/16W +-5%				
R502		038-12470-00	RES 0603 CHIP 47E 1/16W +-5%				
R503		038-14470-00	RES 0603 CHIP 4K7 1/16W +-5%				
R504		038-13100-00	RES 0603 CHIP 100E 1/16W +-5%				
R505		038-14680-00	RES 0603 CHIP 6K8 1/16W +-5%				
R508		038-12220-00	RES 0603 CHIP 22E 1/16W +-5%				
R510		038-12220-00	RES 0603 CHIP 22E 1/16W +-5%				
R511		036-13120-00	RES M/F 0805 CHIP 120E 5%				
R512		038-14100-00	RES 0603 CHIP 1K0 1/16W +-5%				
R515		038-14330-00	RES 0603 CHIP 3K3 1/16W +-5%				
R516		038-13470-00	RES 0603 CHIP 470E 1/16W +-5%				
R518		036-12270-00	RES M/F 0805 CHIP 27E 5%				
R519		036-13390-00	RES M/F 0805 CHIP 390E 5%				
R521		038-13220-00	RES 0603 CHIP 220E 1/16W +-5%				
R522		038-14330-00	RES 0603 CHIP 3K3 1/16W +-5%				
R523		038-14100-00	RES 0603 CHIP 1K0 1/16W +-5%				
R530		038-12220-00	RES 0603 CHIP 22E 1/16W +-5%				
R531		038-12220-00	RES 0603 CHIP 22E 1/16W +-5%				
R532		038-12470-00	RES 0603 CHIP 47E 1/16W +-5%				
R533		036-12330-00	RES M/F 0805 CHIP 33E 5%				
SK401		240-02010-91	CONN 5WAY FEM LOW PROF SKT STRIP PCB M				
		220-01311-01	PCB T3000 800MHZ VCO				



T3000-8000 VCO PCB (IPN 220-01311-01) - Top Side



T3000-8000 VCO PCB (IPN 220-01311-01) - Bottom Side



© TAIT ELECTRONICS
T3000-8000 806-870MHZ
PLUG IN VCO

REV: 2 SC 11
220-01311-01
PROJECT: DESIGNER: 3K8VCLTA
T3000 MAJ

REV/ISS	AMENDMENTS	CHKD	D. O.	APVD	DATE
I.A	UPDATED	MAJ			
P.3	UPDATED	MAJ			
P.1	ORIGINAL	DBH			

